



ASHER Rare Books
Since 1830

Cartography

ANTIQUARIAT
FORUM



Cartography

E-CATALOGUE

Jointly offered for sale by:

ANTIQUARIAAT
FORUM



ASHER Rare Books
Since 1830

Extensive descriptions and images available on request

All offers are without engagement and subject to prior sale.

All items in this list are complete and in good condition unless stated otherwise.

Any item not agreeing with the description may be returned within one week after receipt.

Prices are EURO (€). Postage and insurance are not included. VAT is charged at the standard rate to all EU customers. EU customers: please quote your VAT number when placing orders. Preferred mode of payment: in advance, wire transfer or bankcheck. Arrangements can be made for MasterCard and VisaCard.

Ownership of goods does not pass to the purchaser until the price has been paid in full.

General conditions of sale are those laid down in the ILAB Code of Usages and Customs, which can be viewed at: <http://www.ilab.org/eng/ilab/code.html>

New customers are requested to provide references when ordering.

Orders can be sent to either firm.

Antiquariaat FORUM BV

Tuurdijk 16

3997 MS 't Goy – Houten

The Netherlands

Phone: +31 (0)30 6011955

Fax: +31 (0)30 6011813

E-mail: info@forumrarebooks.com

Web: www.forumrarebooks.com

www.forumislamicworld.com



ASHER Rare Books

Tuurdijk 16

3997 MS 't Goy – Houten

The Netherlands

Phone: +31 (0)30 6011955

Fax: +31 (0)30 6011813

E-mail: info@asherbooks.com

Web: www.asherbooks.com

Maritime atlas of the Middle East, Africa, Indian Ocean, East Indies, Far East and South Pacific: a magnificent display of colonial power ca. 1780

1. APRÈS DE MANNEVILLETTE, Jean-Baptiste d'. Le Neptune oriental, ...

Paris, Antoine Guénard Demonville; Brest, Romain-Nicolas Malassis, 1775.

With:

(2) APRÈS DE MANNEVILLETTE, Jean-Baptiste d'. Supplément au Neptune oriental, ...

Paris, Antoine Guénard Demonville; Brest, Romain-Nicolas Malassis, 1781.

2 text volumes bound as 1, plus 1 atlas volume. Imperial folio (55 × 42 cm). With engraved frontispiece and 72 large engraved nautical charts (33 double-page and 39 single-page, plate size about 50 × 68 and 48 × 35 cm). Uniform contemporary mottled, gold-tooled calf, with the crowned French royal arms on each board and "Conseil de la Marine" below it on each front board. Rebacked, with most of the original backstrips laid down.

(3) APRÈS DE MANNEVILLETTE, Jean-Baptiste d'. Instructions sur la navigation des Indes orientales et de la Chine, pour servir au Neptune oriental, dédié au roi ,...

Paris, Jean-Claude Dezauche (colophon: Brest, printed by Romain-Nicolas Malassis), 1775.

(4) APRÈS DE MANNEVILLETTE, Jean-Baptiste d'. Supplément au Neptune oriental, ...

Paris, Antoine Guénard Demonville; Brest, Romain-Nicolas Malassis, 1781.

Large 4° (26 × 21 cm). 2 volumes bound as 1. "Maroquin"-pattern sheepskin (ca. 1840?), gold-tooled spine. € 75 000

Greatly expanded second edition, plus the rarer posthumous supplement published a year after the author's death, of one of the greatest maritime atlases in the history of French cartography, devoted to exotic regions (the Middle East including the Gulf, the African coasts, the Indian Ocean and East Indies, Southeast Asia, parts of the Chinese coast, and the Pacific islands). Each section starts with a large



Quos ego. Sed motos præstat componere fluctus: Rous. Voy. lib. I.

territorial overview map and closes in on particular area in the subsequent charts. For example the Arabian Peninsula is first displayed on a large overview map showing the coasts along the Indian ocean, which is followed by a chart of the Arabian Sea, and separate charts of the coasts along the entry to the Red Sea, the complete Red Sea, in front of Jeddah and the Arabian Gulf.

It was compiled by Jean-Baptiste-Nicolas-Denis d'Après de Manneville (1707–1780), hydrographer to the French navy, supported by the French East India Company and the Académie des Sciences. “It was at once hailed as a major achievement and welcomed by navigators throughout the world” (Cat. Nat. Mar. Mus.). D'Après continued to improve and expand it for the rest of his life, serving as director of the Company's nautical chart publishing office from 1762. One rarely finds two copies of *Le Neptune oriental* with the same make-up, but the present copy shows its full extent immediately after D'Après's death. The whole is not only a magnificent collection of sea charts, but also an essential key to understanding European colonial power ca. 1780.

The present copy of the *Neptune* may have first belonged to the Secrétairerie d'État. In 1806 Napoleon revived the Conseil de la Marine, which had been replaced by the Secrétairerie d'État in 1723, so those words must have been added in 1806. Also with bookplates. With a couple charts slightly browned (one of them also with an unintended crease), a few pages in the *Instructions* (mostly in its supplement) with a marginal worm trail, and an occasional very minor hole or spot, but generally in very good condition (most leaves of the *Instructions* fine). The *Neptune* has been expertly rebaked as noted, with the loss of parts of the backstrips, but the bindings of the *Neptune* and *Instructions* are otherwise very good. A splendid maritime atlas, beautifully bound for the French navy.

Cordier, Sinica 134; Cat. Nat. Mar. Mus. 204; Howgego A107; Phillips & Le Gear 3166, 3167 & 3168.



Graphically stunning 3-volume historical manuscript atlas

2. [ATLAS]. Atlas historique.—Souvenirs historiques.—Tableaux et cartes.

[Montpellier?], [date on spine of vol. 1:] 1851. 3 volumes. 2° (vol. 1) and large 4° (vols. 2–3). Neatly written manuscripts on paper with 23 graphically vibrant maps, coloured in outline with subtly shaded washes in grey (for the coasts) and numerous bright colours (for political boundaries), and with calligraphic headings. Contemporary bindings: vol. 1 red half goatskin; vol. 2 black half goatskin; vol. 3 black sheepskin. € 4250

A 3-volume historical manuscript atlas with beautiful manuscript maps, the volumes titled: *Atlas historique*, *Souvenirs historiques* and *Tableaux et cartes*. The *Atlas historique* contains finely calligraphed chronological tables displaying events in ecclesiastical history, the history of the Roman Empire and France, from the first century to 1850, followed by coloured double-page maps of France, the Ottoman Empire, Europe and the Roman Empire. The *Souvenir historiques* has the same structure, but is solely devoted to the history of England, Spain, Germany and Italy, covering the period from the fifth century to 1850, with coloured double-page maps of the British Isles, the Iberian Peninsula, the German states, and Italy. The *Cartes et tableaux* is the most ambitious volume, containing no fewer than 14 coloured double-page maps, including two world maps, maps of Africa, Asia, America, Oceania, Europe, etc., and numerous chronological tables.

The ink has sometimes left a browned shadow on the back of the leaves or facing leaves and occasionally eaten a small hole in the paper, but the atlas is otherwise in very good condition. Bindings slightly chafed. A graphically vibrant French historical manuscript atlas.



Splendidly decorated wall map of Delft, coloured by a contemporary hand

3. [BLEYSWIJCK, Dirk Evertsz. van]. [Afbeeldinge der stad Delft].

Amsterdam, Pieter Smith, [1678?]. 4 sheets (83 × 126 cm. as assembled). Contemporary hand-coloured, engraved map of Delft, with Delft coats of arms at top centre; cartouche at top left with the Dutch lion in a fishing boat, and coats of arms of Delft, Schiedam, Enkhuizen, Brielle and Rotterdam; cartouche at top right with an inset map of Delfland and the coats of arms of Delfland and the water authorities, and views of the palaces of Honselerdijk and Rijswijk; a 14-line poem in praise of the map by Constantijn Huygens and a key at bottom right; compass and scale of Delftland or Rijnland rods at bottom left; and the names of the publisher and engraver at bottom left and left of centre, numerous figures, fruits and vegetables, real and mythical animals, etc. Mounted on linen and framed. € 9500



A large, splendidly decorated map of the city of Delft in South Holland: “As a masterpiece of precision and of the engraver’s art, it stands out above all that was produced in that genre before or after, whether for Delft or for other cities” (J. Soutendam in Obreen, p. 197). It also happens to be one of the best documented examples of map making and engraving of the Dutch golden age, with invoices, receipts and attached documents preserved for its production in the years 1675–77. The costs ran to well over 2500 guilders. In or shortly before 1675, the burgomasters of the city of Delft charged former burgomaster Van Bleyswijck (1639–1681), author of the 1667 *Beschryvinge der stad Delft* (Description of the city of Delft), with the oversight of this map’s production. Johannes Vercolje (1650–1693), Delft painter and mezzotint artist, executed most of the drawings, including that for the central map itself. The principal engraver was Johannes de Ram (1648–1693), as noted on the map. Romeyn de Hooghe was involved as well, but whether he carried out any work on the four main plates represented here is unclear.

Overall slightly soiled and browned and rubbed in places, with some loss of image or engraved text, most notably in the lower corners. A beautiful and remarkable city map in reasonable condition, professionally restored.

B. v’t Hoff, Oude Plattegronden Delft 17 (pp. 37–51); Obreen, Archief III, pp. 197–206; Koeman III, p. 98 (De Ram); Landwehr, De Hooghe etcher, p. 371.

A rare pocket atlas for officers and travellers, with 25 maps

4. CLEYNHENS, Bernardus. Accuraat geografisch kaart-boekje of zak-atlas van het keyzerryk en geheel Duytsland, de Oostenrykse Nederlanden, ...

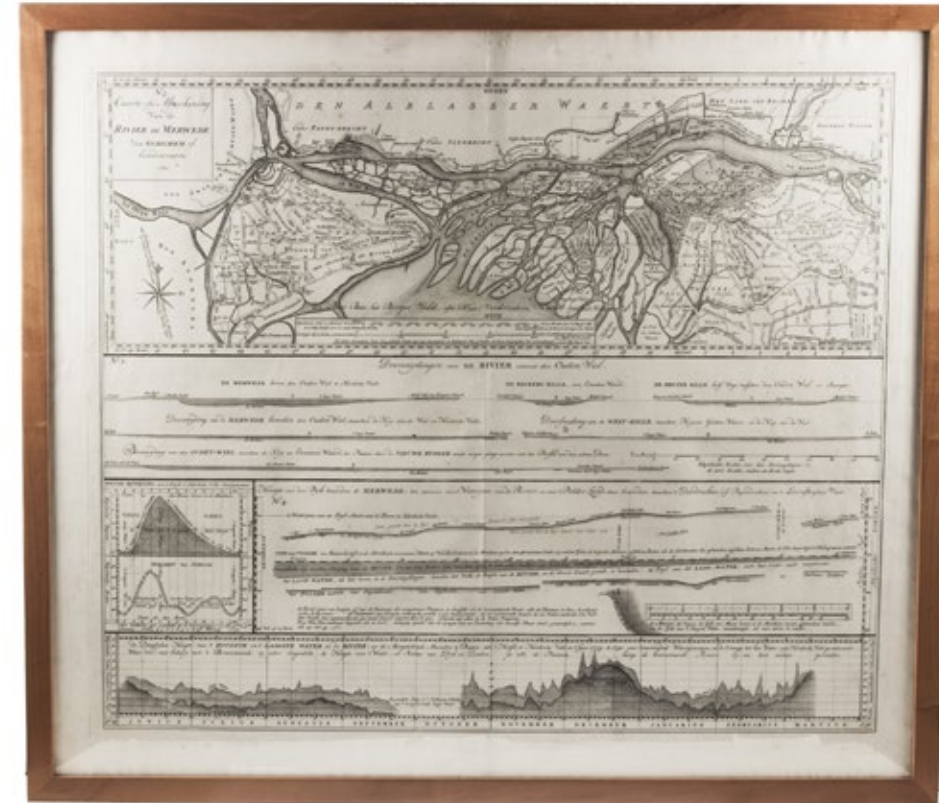
Haarlem, Bernardus Cleynhens, [ca. 1747?]. Small 8° (16 × 10 cm). With 25 double-page engraved maps (2 overview maps), and an engraved plate with 8 scales, all hand-coloured, partly in outline. Half textured red cloth (ca. 1860?). € 5000

A surprisingly rare pocket atlas illustrating the theatre of the “tegenwoordigen” (present) war, probably meaning the War of the Austrian Succession (1740–1748) but possibly the Seven Years’ War (1756–1763). The title-page notes that it is suited for officers, travellers and lovers of geography to carry in a pocket. The text (in Dutch) gives a geographic description only of “Duytsland” (Germany), including Austria, Bohemia and a few other areas, whereas the maps also cover the Low Countries, the English Channel, northwest France and to the east as far as Warsaw, Krakow and Belgrade. The 23 detail maps were designed so that they could be assembled with the key map to make a single wall map, whose cartographic image would measure 53 × 90 cm.

With a contemporary owner’s, bookplate, embossed stamp and library labels. With the text leaves somewhat browned, not affecting the maps or the plate with scales, and the first 2 leaves slightly worn, but generally in good condition. A rare pocket atlas from the War of the Spanish Succession.

Koeman I, Cle 1; STCN (2 copies); WorldCat (2 copies).





The most influential river map of its time

5. CRUQUIUS, Nicolaas. De rivier de Merwede, ...

Including: No. 3. Caarte ofte afteckening van de rivier de Merwede ...

[The Hague, National Printing Office, 1730]. An engraved map of the river Merwede, the main map (53.5 × 124.5) on two sheets at a scale of 1:10 000, together with a separate engraved overview map (22 × 63 cm) with diagrams showing river depth and dike profiles, and tidal and seasonal changes in the water level. Framed (64.5 × 134 & 64.5 × 74 cm). € 6500

Engraved map commissioned by the Provincial Council of Holland, of the river Merwede by Nicolaas Cruquius, showing the area between Sliedrecht/Hardinxveld to Gorinchem, including parts of the Biesbosch, accompanied by an overview map showing the river through a larger area from Dordrecht to Gorinchem.

This map, the most influential river map of its time, demonstrates the high quality of Dutch institutional cartography in the 18th century. It set a standard for Dutch river mapping and, closely related, determined the parameters of the topographical research that should always accompany it. The main purpose of the map was to help find a solution to the frequent flooding in a vast low-lying area along the south river bank called the Biesbosch, problems that had plagued the region chronically since a 15th-century dike breach that was never fully rectified.

A fine of an unsurpassed river map and a landmark of Dutch cartography.

V.d. Brink, Hollandse rivierkartog. 8; Koeman, Handleiding, p. 103, no. 123.

*Pocket atlas of the Low Countries
with the world and the continents,
coloured by a contemporary hand*

6. ELWE, Jan Barend. Compleete zak-atlas van de zeventien Nederlandse provinciën, begrepen in xxxi, zeer naauwkeurig en zindelyk in 't koper gebragte kaarten.

Amsterdam, Jan Barend Elwe and Dirk Meland Langeveld, 1785. 8°. With double-page engraved title-page, 29 folding engraved maps and 2 folding engraved tables, all coloured by a contemporary hand. Contemporary boards, rebaked with modern half calf.

€ 2950

First edition of a pocket atlas of the Low Countries with attractively coloured maps. The introduction deals with geography in general, and also gives a description of the different parts of the Netherlands. The atlas opens with two distance tables for Dutch cities, followed by a world map, 4 maps of the continents (North and South America together in 1 map), all updated in accordance with the latest discoveries of Captain Cook, and maps of the Low Countries (17 provinces), the Dutch Republic (7 provinces), the Austrian Netherlands (10 provinces, more or less the modern Belgium), and maps of the individual provinces of the Dutch Republic and the Austrian Netherlands.

With 19th century owners' inscriptions. Some water stains and soiling, a reasonable copy.

Koeman, E & L 1; STCN (3 copies, incl. 1 incomplete); not in Phillips & LeGear.



The greatest celestial atlas revised and expanded

7. FLAMSTEED, John and Jean Nicholas FORTIN. Atlas Céleste de Flamstéed, approuvé par l'Académie Royale des Sciences, et publié sous le privilege de cette compagnie.

Paris, F.G. Deschamps, "l'Auteur" [= Fortin] (colophon: printed by the widow Hérisant), 1776. 4°. With 30 double-page engraved star charts, 9 pages of letterpress tables of stellar data. Contemporary half calf, gold-tooled spine. € 4500

The first revised edition (and first French edition) of Flamsteed's great, innovative and highly influential stellar atlas ("superior to all earlier atlases"—Warner), first published posthumously in 1729 (in folio) and here reduced, revised and corrected with the addition of a large number of new stars. This edition also expands the original 2 celestial hemispheres and 25 detailed star charts centred on particular constellations by adding the omitted hind parts of the constellation Hydra, a much more detailed chart of the central part of the southern hemisphere (never visible from Europe) by Nicolas Louis de Lacaille and a chart showing triangulations in the northern hemisphere. In fine condition, with only a small spot on the title-page and a couple marginal spots in the plates. Binding rubbed. A carefully revised and corrected edition of the most important celestial atlas of the 18th century.

Brown, Astron. Atlases, pp. 47–48; De La Lande, pp. 553–554; DSB V, pp. 22–26; Warner, The Sky Explored, pp. 80–82 note.



*Including the anti-Napoleonic
map of Europe as a middle-aged housewife*

8. FOKKE SIMONSZ., Arend. Boertige reis door Europa.

Including:

- Geheimzinnige toebereidselen tot eene boertige reis door Europa.
- De pakketboot, of historie van Engeland, van de grondlegging van dat koninkrijk af, tot op heden.
- London, in een boertigen stijl beschreeven.

Haarlem, François Bohn, 1794–1798. 3 parts in 1 volume. 8°. With 2 hand-coloured folding engraved maps of Europe, one in the shape of a woman, in the first part, 2 folding engraved caricatures in the second part, and 4 engraved caricatures and large folding engraved plan of London in the third part. Contemporary half tanned sheepskin, gold-tooled spine. € 1750

First edition of the first three parts of a satirical voyage through Europe. Here goes, however, not further than by boat to England, and then to London. In 1802 the publication was continued, and four more parts were published up to 1809. Of special interest is the hand-coloured anti-Napoleonic map (“Europa volgens de nieuwste verdeeling”) depicting Europa as a middle-aged housewife instead of a virgin-queen, engraved by Hendrik Klockhoff, published here for the first time.

Small tear in the margin of the map of Europe (not touching the plate), minor dampstain in the foot margin of the last third of the book and some occasional thumbing. Otherwise in very good condition. Binding rubbed along the extremities.

Cf. Sale cat. coll. Buisman 350; Waller 551–555.



Atlas of Brabant & Holland for Officers in the War of the Austrian Succession

9. **FRICX, Eugène Henri.** Nouveau theatre de la guerre aux Pays Bas, ou Cartes tres detaillées du Duché de Brabant et partie de la Hollande ... apres ... Covens et Mortier. ... en 25 petites cartes dont une générale divisée en 24 quarreaux est numerotée ...

Lille, Bachelet; Ghent, P. de Goesin; Brussels, George Fricx & Jean Leonard; Antwerp, Martin Verdussen; Liege, S.F. Bourguignon; Cologne, Rodrigue; Berlin, S. Paul; Nürnberg, Homann heirs; Strasbourg, M. Schatz; Paris, [Roch-Joseph Julien (& Guillaume Dheulland?)], [1747]. Agenda 8° (26 × 11 cm) With 25 folding engraved maps, consisting of 1 overview map and 24 numbered detail maps (each detail map 22 × 30 cm at a scale of 1:180 000). Contemporary mottled calf, gold-tooled spine. € 1950



An atlas of 24 numbered detail maps and an overview key map with the general title, presented as a conveniently portable theatre-of-war atlas “pour la commodité de Mrs. Officiers” toward the end of the War of the Austrian Succession (1740–1748). It was based on the much earlier maps of Eugène Henri Fricx or Friex (1644–1730), revised and published by his nephew George Fricx or Friex in Brussels. The maps could also be assembled to form a large wall map that would measure about 125 × 118 cm. It covers the southern parts of the Dutch Republic and the northeastern parts of what is now Belgium, covering The Hague and Leiden to Zutphen in the north and Brussels to Aix-la-Chapelle in the South.

The atlas is undated, but the Newberry Library has a 1747 prospectus for it, issued by Guillaume Dheulland in Paris, who published a similar atlas of Italy with Julien in 1748 (though they did not share an address).

In the present copy the maps are bound as double-page maps with both ends folded in, giving the tall and thin agenda format.

The red pigment used to colour the edges appears to have browned the right-most fold of each map, and as a result several have torn along that fold. Otherwise the maps are in good condition, with a couple smaller tears only slightly affecting the image and marginal worm holes at the foot of a few maps, near the gutter. The binding shows some damage.

M. van Egmond, Covens & Mortier, p. 122; IKAR (1 copy); Koeman, C & M 19 (4 copies); WorldCat (2 copies).

Large map of the new dyke near Muiden

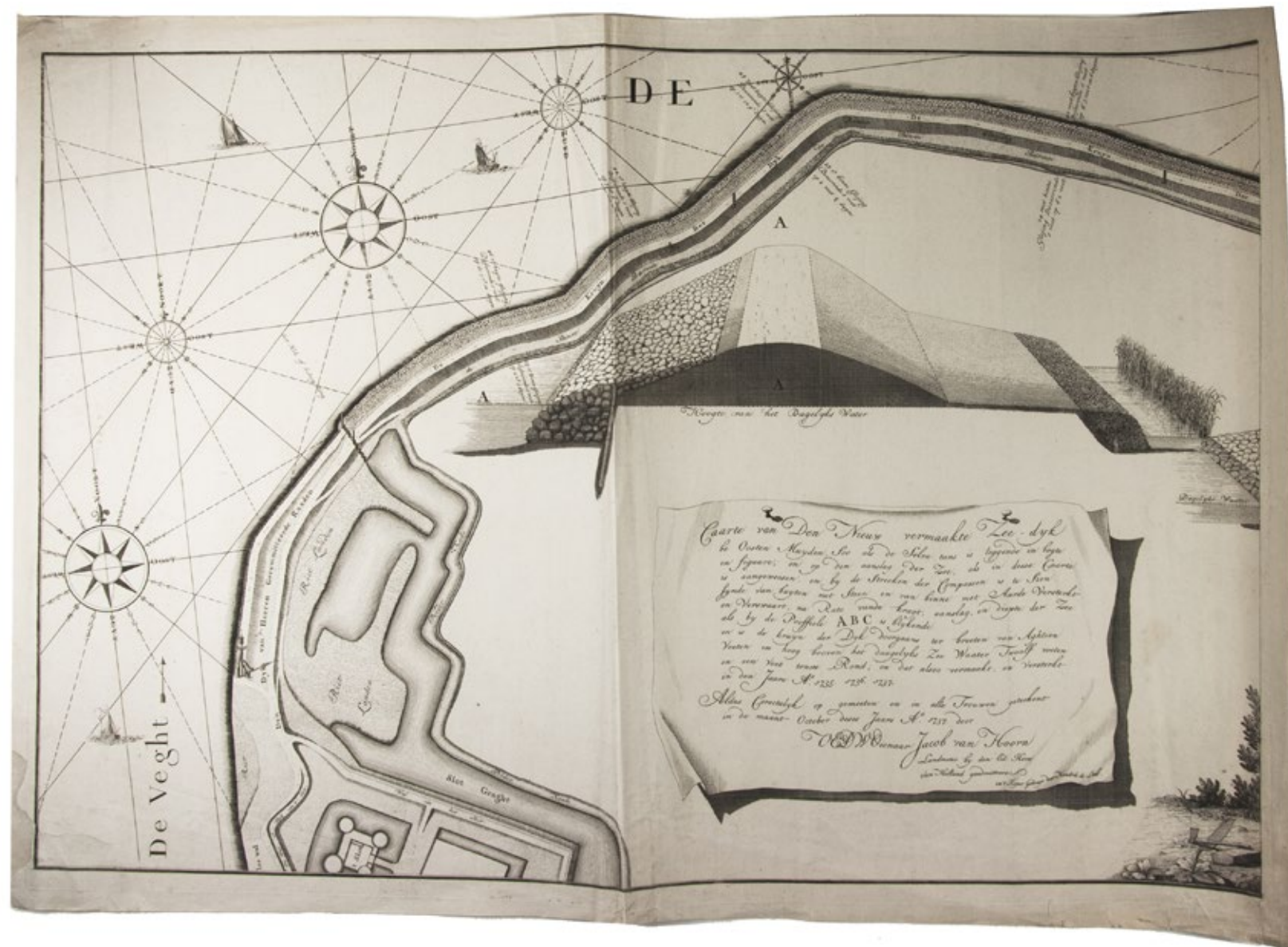
II. HOORN, Jacob van. Caarte van den nieuw vermaakte zee-dyk be oosten Muyden ...

[Amsterdam], Hendrik de Leth, 1737. Large engraved map on two separate sheets (63.5 × 90 cm each), with 3 cross-sections of the dyke, a scale bar (ca. 1:11 000) and 11 compass roses. € 1800

Rare, large engraved map by Hendrik de Leth after Jacob de Hoorn, of the new dyke east of Muiden in the Netherlands. It was most likely commissioned by the Hoogheemraadschap van de Zeedijk beoosten Muiden. In 1732 it turned out the wood used for the dyke was damaged by sea worms, which led to a renovation of the dyke during the years 1735–1737.

Slightly creased and margins somewhat frayed, second sheet with a few stains and some marginal tears, restored at the back. A good copy.

Donkersloot-de Vrij, De Vechtstreek 30 (3 copies).





Meiji-era map of Kyoto

12. IKEDA Tori. [Map of Kyoto].

Koto (Tokyo), Tori Ikeda, Meiji 11 [1878]. Woodcut map on paper (37 × 50 cm), printed in six colours.

€ 875

Colour-printed woodcut map of Kyoto, traditionally with the east at the top. Different colours show the different types of area in the city, with the temples printed in red and often named with text.

Red stamp in the upper right corner, some marginal spots along the extremities, otherwise a good copy.

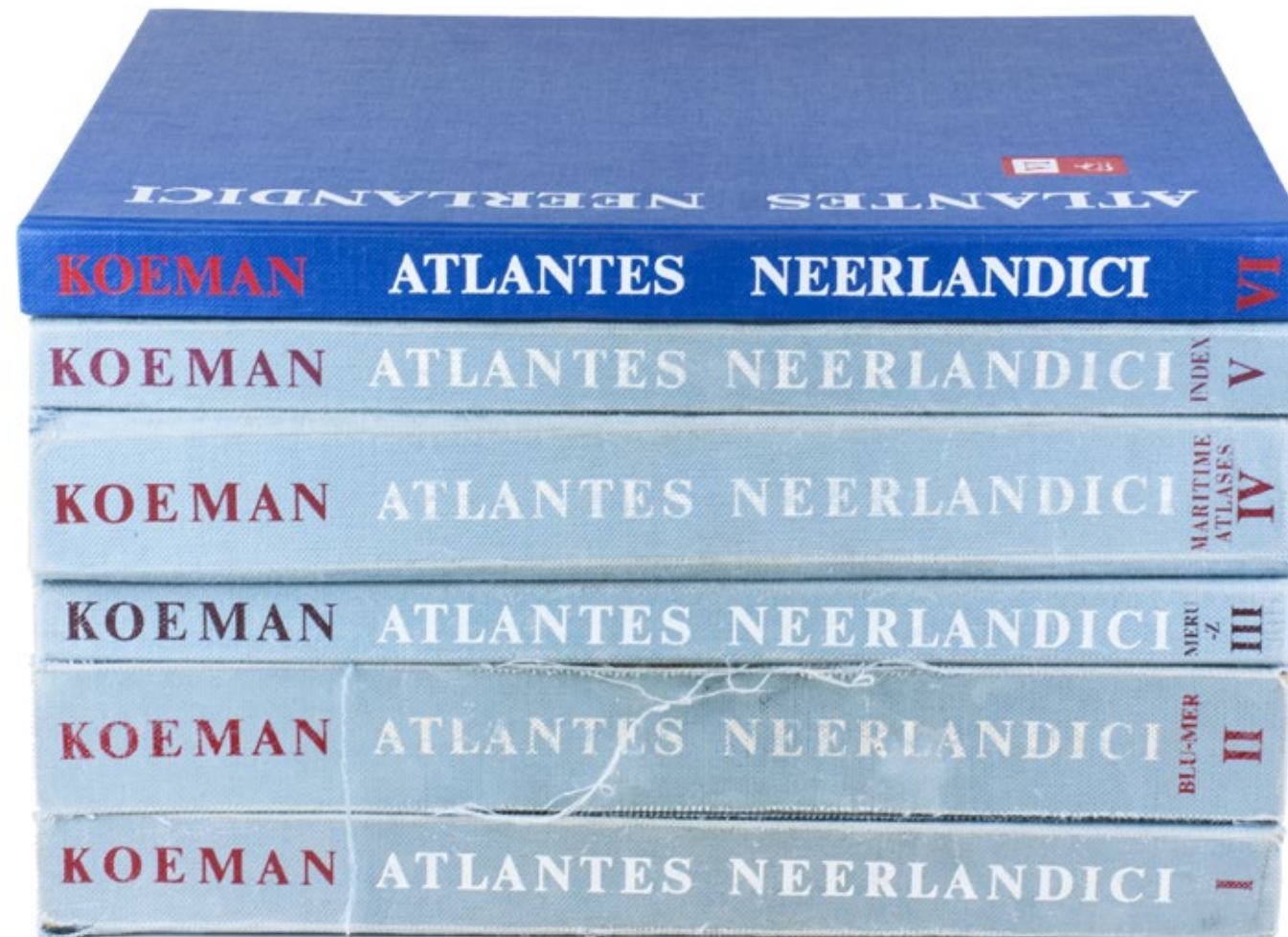
Classic bibliography of atlases published in Netherlands

13. KOEMAN, C. Atlantes Neerlandici. Bibliography of terrestrial, maritime and celestial atlases and pilot books, published in the Netherlands up to 1880[–1940].

Amsterdam, Theatrum Orbis Terrarum, 1967–1985. 6 volumes (incl. supplement). Blue cloth (volume 6, as usual, somewhat darker blue). € 950

Classic bibliography of atlases published in Netherlands. Including the supplement volume.

Spines slightly faded and some marginal rubbing along the extremities, one volume with the hinges cracked. Very good set.



*Detailed itineraries and maps for travel to, in and around New Caledonia,
printed in New Caledonia*

14. LEMIRE, Charles. La colonisation Française en Nouvelle-Calédonie et dépendances; ...

Paris, Challamel aîné (colophon: Nouméa, Imprimerie du Gouvernement), [1878/79].

Including: **LEMIRE, Charles.** Itinéraire kilométrique voyage à pied en N[ouve]lle Calédonie ... 1877.

Nouméa, lithographed by Ernest Melin, [ca. 1878]. 2 parts in 1 volume. Small 4° (22 × 17 cm). With 1 original photographic albumen print with a view of Nouméa; 3 (of 4) folding lithographed maps (1 tinted, 2 chromolithographed); 3 chalk lithographic views of indigenous New Caledonians by Ernest Melin (2 tinted); 2 lithographic illustrations; and 2 extra folding double-tinted lithographic plates. Bound with the wholly lithographic *Itinéraire kilométrique*: LXXIII pages on 37 leaves, also called for in the list of plates. The general map of New Caledonia is lacking. Later black goatskin morocco. € 3500

€ 3500



An extremely detailed guide book for French colonists travelling to and/or living on the island of New Caledonia or the surrounding islands, about 1600 kilometres east of Australia, by Charles Lemire (1839–1912), a French government official with responsibility for both telegraphy and colonization. Though the book was published in Paris the text and most of the plates, as well as the accompanying lithographic *Itinéraire* were printed in Nouméa in New Caledonia. It provides detailed information about both the voyage from France to New Caledonia and life in New Caledonia.

The 73-page *Itinéraire kilométrique* bound at the end gives an extremely detailed itinerary for an 1100 kilometre walk around the perimeter of New Caledonia.

Several pages with owner's stamp. Lacking the general map of New Caledonia. The world map has torn at the folds and been repaired with tape. The book and the *Itinéraire* bound with it are further complete and in good condition, some browning and with an occasional tear. An extraordinary source of information on New Caledonia ca. 1878.

De Indische gids I (1879), p. 672; not in Ferguson; Robert; Wantrupl.

Rare 18th-century wall map of the Netherlands

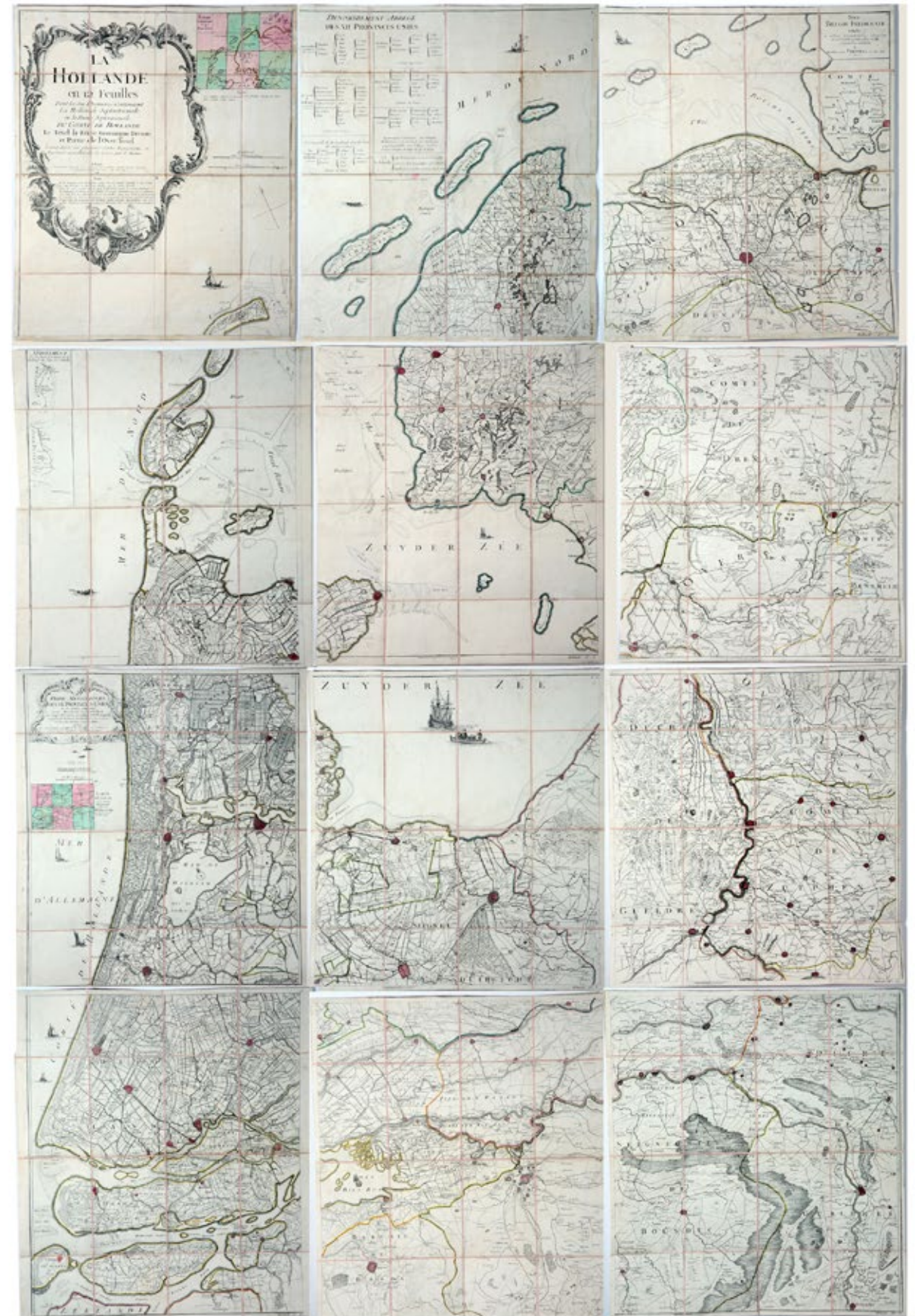
15. [LE ROUGE, George-Louis]. La Hollande en 12 feuilles.

Paris, Jean Dezauche, 1790. Published on 12 sheets, numbered as 48 quarter-sheets. An engraved wall map of the Netherlands (excluding Zeeland), with the main title in a large cartouche at upper left, the Latin title at upper right. Many cities and coastlines, and a few other features, highlighted in colour. Cut, mounted on cloth and folded, in 4 contemporary gold-tooled green morocco boxes. € 8500

Third state of the first map of the Netherlands on such a large scale, mostly about 1:105 000, but with some eastern regions squeezed in at about 1:140 000. Fully assembled it has an image area of about 231 × 152 cm. Then as now, foreigners used the name “Holland” to refer to the entire Northern Netherlands, at this time comprising the seven provinces of the Dutch Republic. Zeeland falls almost entirely outside the borders of this map, however, so it covers the provinces of Holland, Utrecht, Friesland, Groningen, Overijssel and Gelderland (Drenthe was admitted as a province independent of Overijssel only in 1796). Originally published by Le Rouge in 1748, the plates were revised for publication in a second state by Jean Crepy ca. 1770, and in a third by Jean A. Dezauche in 1790.

2 sheets with slight glue stain in blank margins. Boxes a bit rubbed and scratched. Fine, well-preserved copy.

De Vries, “Een Franse wandkaart van Nederland uit 1748”, in: Caert-Tresoor, 1 (1989), pp. 24–29.



*Beautiful and very large hand-coloured map of Edo (Tokyo)
toward the end of the Tokugawa shogunate*



16. [MORI Fusai and KANAMARU Hikogoro].
Bunken Edo oezu. Kan.

Tokyo, Subaraya Mohe, [Ansei 5 (1858)?]. 166 × 189 cm.
Accordian folded (horizontally and vertically) between two
contemporary paperboards with covered with blue paper,
each embossed with 5 large decorations, woodcut title-label
on front board (board size 32 × 21 cm). € 2500

A large and very detailed woodcut map of Edo (since 1868 Tokyo) and surrounding areas by Mori Fusai, coloured by hand in blue, red, green and yellow. It covers an area to about 4 kilometres from the centre, including the coast of the harbour, and follows in the tradition of Kanamaru Hikogoro, who produced maps of Edo with a similar lay-out beginning in 1778. The map is printed from woodblocks on 15 sheets of Japanese (mulberry bark?) paper (each about 56×38 cm) and assembled with 5 across and 3 down to form one large folding map at a scale of about 1:9000. As assembled it measures nearly two meters in each direction. We have found no printed date on the map, but the East Asian Library of the University of California at Berkeley has what appears to be an identical map and dates it Ansei 5 (1858).

With some tears along the folds, but otherwise in very good condition. The binding shows only minor wear. A magnificent large Japanese map of Edo (Tokyo), a decade before the fall of the Tokugawa shogunate.

<http://www.davidrumsey.com/japan/xmaps1007.html> (dated "[1858]"); WorldCat (3 copies, dated "[1865]" and possibly a 4th, dated "(1864)").

Map of Berbice and Surinam, coloured by hand

17. OTTENS, Joachim and Reinier. Nieuwe gemeten kaart van de colonie de Berbice.

Amsterdam, Joachim and Reinier Ottens, [ca. 1764]. Engraved map of Berbice (image size: 49 × 96.5 cm), coloured by hand, with an inset map of Surinam (21 × 30 cm) at bottom left, the title in a cartouche at the bottom right with a scale bar below (ca. 1:100 000), an account of the Berbice slave uprising at the top left, a compass rose at the centre, and sailing instructions at the top right. Framed (69 × 115 cm). € 950

Second state of a map of the former Dutch colony Berbice in Guyana, with an inset map of Surinam. The map was first published in 1740 and here updated with an account of the Berbice slave uprising, that began on 23 February 1763 and lasted into 1764.

Not including the letterpress text “Lijst der plantagien gelegen op de rivieren De Berbice en Canje” as mentioned by Koeman. A very good copy.

Koeman, Bibliography of printed maps of Suriname 255.



ORBIS
TERRAQUEUS
IN
TABULIS
GEOGRAPHICIS
ET
HYDROGRAPHICIS
DESCRIPTUS,

SIMONE PAULLI
Bibliopola Argentinenfi.



ARGENTORATI,
In Officina Libraria Editoris.

M. DC. LXX.

First carto-bibliography

18. PAULLI, Simon the younger. Orbis terraqueus in tabulis geographicis et hydrographicis descriptus, ...

Strassbourg, "in officina libraria editoris" [= bookshop of the compiler Paulli], 1670. Small 8° (18 × 11 cm). Boards (ca. 1700?). € 5000

First and only edition of the first carto-bibliography, systematically listing over 2200 maps and sea charts, mostly arranged geographically. The structure is clearly presented in the hierarchical table of contents, which divides the book into three main parts, each with its own pagination and series of quire signatures. The first part covers maps of the ancient world, sacred and secular. The second part gives the main catalogue of geographical maps, briefly covering the world and the arctic before continuing with Europe, arranged by countries and sub-divided by duchy, province, department or county, followed by Africa, Asia and America. It covers maps by the 16th and 17th century's leading publishers of atlases and single-sheet maps, including Ortelius, Hondius, Blaeu, Janssonius, Visscher, Sanson, De Wit, Danckerts and Allard, but also includes maps from more fugitive sources like local histories. The last part describes some 130 sea charts, pilot guides and sea atlases, mainly by Goos, Van Loon and Theunis Jacobsz.

With a marginal stain in the corner of the first 2 quires. Binding somewhat rubbed and hinges reinforced. Good copy of a rare pioneering work of carto-bibliography.

Besterman, WBB 1157; Koeman, Collections of maps and atlases in the Netherlands, p. 29; Meurer, "Orbis terraqueus ...", in: Imago mundi, 36 (1984), pp. 64–65; Phillips, List of works relating to cartography, p. 70.



*A large folding map of the Rhine,
decorated with views and plans*

20. [RHINE]. Der Rhein und seine Umgebungen, nebst einer Karte des Rheinlaufes von Schaffhausen bis zur Nordsee.

Mainz, David Kapp, 1850. Large lithographed folding map (121 × 22 cm) of the Rhine by Johann J. Lehnhardt, decorated with views and plans, partially hand-coloured, with a smaller 8° letterpress booklet. Half cloth (22.5 × 11.5 cm). € 350

Rare folding map of the Rhine, with accompanying tourist guide with descriptions of its cities, villages and interesting sights, from its origins in Switzerland to the North Sea.

Foxed and spine partially cracked, a reasonable copy.

WorldCat (4 copies).

Mexico, Peru and indigenous American culture

21. ROBERTSON, William. L'histoire de l'Amérique ... Traduite de l'anglais.

Paris, Panckoucke, 1778. 4 volumes. 12°. With 4 title-pages, each with a different woodcut vignette, 4 folding engraved maps depicting the Gulf of Mexico (33 × 49 cm), South America (46 × 33 cm), Mexico (30 × 39 cm), and the northwestern part of South America (39 × 25 cm) and 1 folding engraved plate illustrating the chronology of Mexicans (27 × 24.5 cm). Contemporary French calf, gold-tooled spines with red morocco labels, marbled endpapers and edges. € 975

A French translation of an immensely popular anthropological account of American history that focuses on the explorations, the conquest of Mexico and Peru, and the anthropology of the indigenous American cultures. "In these volumes Robertson wrote the first history of the discovery and Spanish conquest of America based on ample bibliographical information and documents in the Simancas archives. The bibliography [a catalogue of Spanish books and manuscripts] at the end of the last volume is remarkable for the time" (Borba de Moraes).

The map in the first volume shows the Gulf of Mexico with Florida and New Orleans and the Caribbean Islands. The work was first published in 1777, and reprinted many times and translated into several languages.

In good condition, with some small nicks and tears throughout, affecting the text in 1 leaf. Quire P in volume IV misbound. With some cracks in the hinges and other minor damage to the backstrips, but bindings good. Famous history of Spanish activities in America.

Cf. Borba de Moraes, pp. 740–741; JCB 2509 (1778 Panckoucke 4° ed.); Leclerc 516 (1778 Panckoucke 4° ed.); Sabin 71991 (1788 Neufchatel 12° ed. and 1778–1780 Panckoucke 12° ed.); for Robertson and his history of America: *American anthropologist* 62 (1960), pp. 648–655.



1784 copy of a 1568 manuscript map of Walcheren and Zuid-Beveland in Zeeland

22. RUYTE, Lieven. [Walcheren ... Zuyt Bevelant].

Tholen, Korstiaen Bestebroer, 1784. Map: 42 × 52.5 cm (frame: 61 × 71.5 cm). Manuscript map in ink and watercolour on paper (map image 37 × 47 cm) at a scale of about 1:55 000 with north at the top. Framed. € 1900



A manuscript copy of a 1568 manuscript map of what were then islands and waterways in Zeeland, covering the eastern half of Walcheren, most of Zuid-Beveland, the southern edge of Noord-Beveland and some smaller islands. It includes the cities of Middelburg, Veere, Vlissingen and Goes, and about twenty smaller towns and villages. It is executed in pen and watercolour in subtle shades ochre, blue, yellow, grey, green and pink and represents the cities and towns pictorially (with major churches and sometimes smaller buildings and fortifications), shows roads, 7 boats and ships in the water and sandbanks.

The map was originally drawn by the surveyor Lieven Ruyte (ca. 1553–1601), apparently based on his own survey, and covers an area of about 19×27 kilometres. The original map of 1568 is said to have been in the hands of the town clerk of the city of Goes but is now known only from copies. With some foxing, mostly in or near the margins, but otherwise in very good condition. Some minor tears are confined to the margins and the map is very slightly worn along an old vertical fold. A detailed map showing islands and waterways in Zeeland as they were in 1568.

Cf. Donkersloot-de Vrij, Topografische kaarten 692; Zelandia illustrata, p. 615.

Expanded and illustrated second edition of a classic description of Friesland

23. [SCHOTANUS, Christiaan]. Beschryvinge van de heerlyckheydt van Frieslandt tusschen 't Flie end de Lauwers. [Franeker], Johannes Wellens, [1664]. 2°. With engraved title-page, full-page engraved coat of arms of the province of Friesland, and 46 engraved maps and plans (4 large folding maps, 31 double-page maps and 11 double-page city plans) by Jacob van Meurs after Bernardus Schotanus à Sterringa. Contemporary blind-tooled vellum. € 5000

Greatly expanded and revised second edition of Schotanus's classic description of Friesland and the Frisian people. The first edition was published in 1655, without engravings, as *beschryvinge ende chronijck vande heerlickheydt van Frieslandt* and included the history from the earliest times to ca. 1500. In 20 chapters, it covered the origins of the Frisian people, the Roman, Frankish, Norman, Saxon and Burgundian eras, Friesland's special status under Charlemagne and his successors from the 9th to the 12th centuries, customs and manners, and the history of the Church. In the present second edition the chapters were rearranged and descriptions and illustrations of the municipalities and cities were added.

Christiaan Schotanus (1603–1671), minister of the Church and professor of Greek, Church history and theology at the University of Franeker, is best known for his publications on the history of Friesland.

Two maps repaired and with some occasional minor spotting. Very good copy.

Bodel Nijenhuis 2587; Tiele, Bibl. 976.



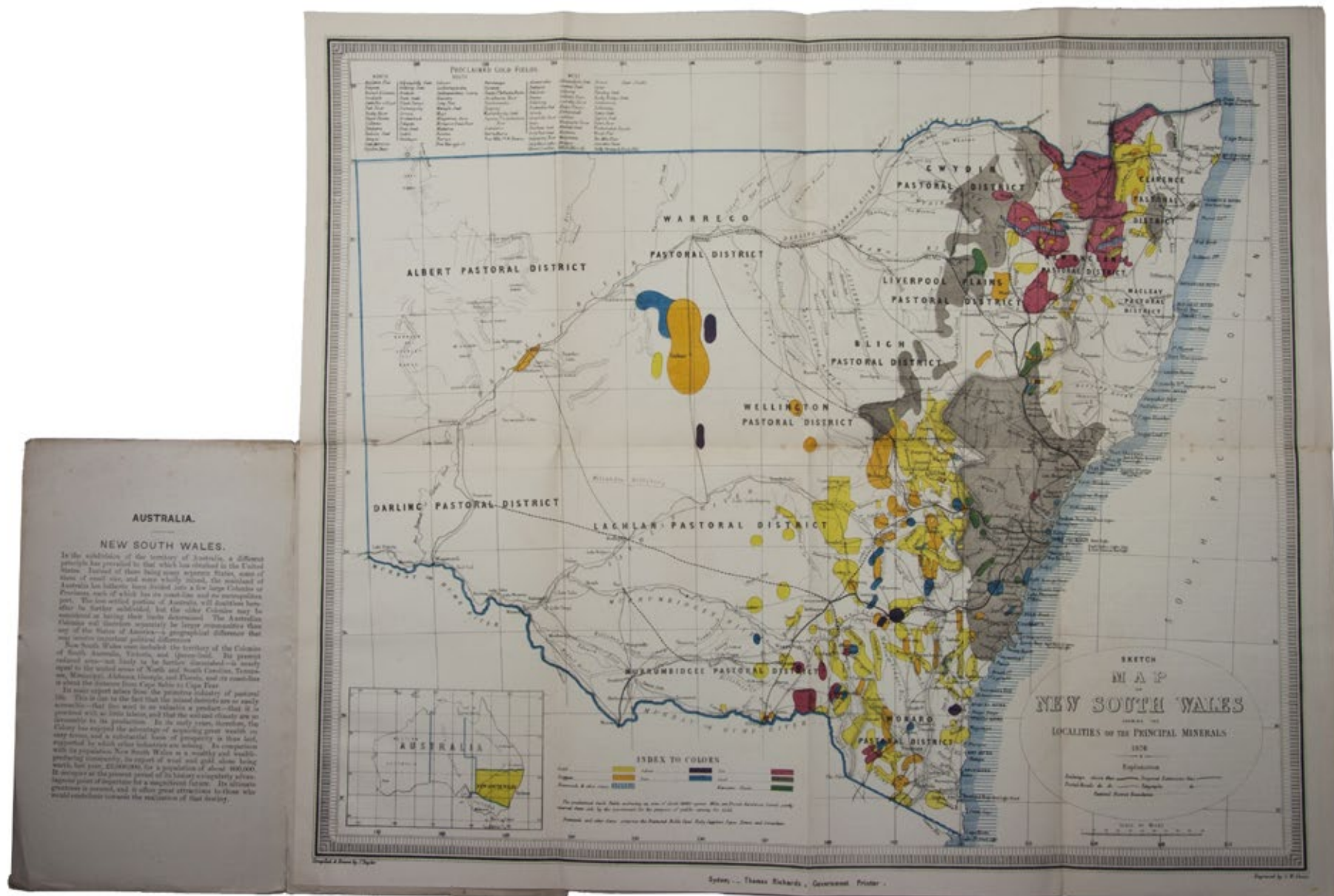
The natural resources of New South Wales

24. TAYLOR, J. Mineral map and general statistics of New South Wales, Australia. [title on map: Sketch map of New South Wales showing the localities of the principal minerals, 1876].

Sydney, Thomas Richards, 1876. 8°. With a folding chromolithographed map by G.W. Sharp after J. Taylor (37.5 × 44.4 cm). Original publisher's printed lavender wrappers, with a woodengraved view of the Sydney University on the back. € 950

First edition of a mineralogical map, showing the entire province of New South Wales, together with an index to the colours and a list of proclaimed gold fields. There are no separate text pages, instead the letterpress explanatory text is printed on the inside of the front wrapper (general chapter about the province) and in 7 sections on the back of the folding map. Six of these sections list all kinds of relevant data collected in 1874 and 1875, such as population, trade per head of the population, figures of international trade, length of railways, amount of live stock, and the output of the coal, tin, gold and copper fields. The final section advertises the province for settlers in a series of 11 "advantages of new South Wales as a home for the emigrant", such as ready employment, cheap cost of living, good soil and climate, great mineral resources, Sydney and its harbour, etc. "All this may be enjoyed among a people whose whole social life is so like Home that it is scarcely possible for the emigrant to feel like 'a stranger in a strange land'" (advantage 10). Edges of wrappers faded with a tiny tear. A very good copy of this mineral map.

Ferguson 13171a.



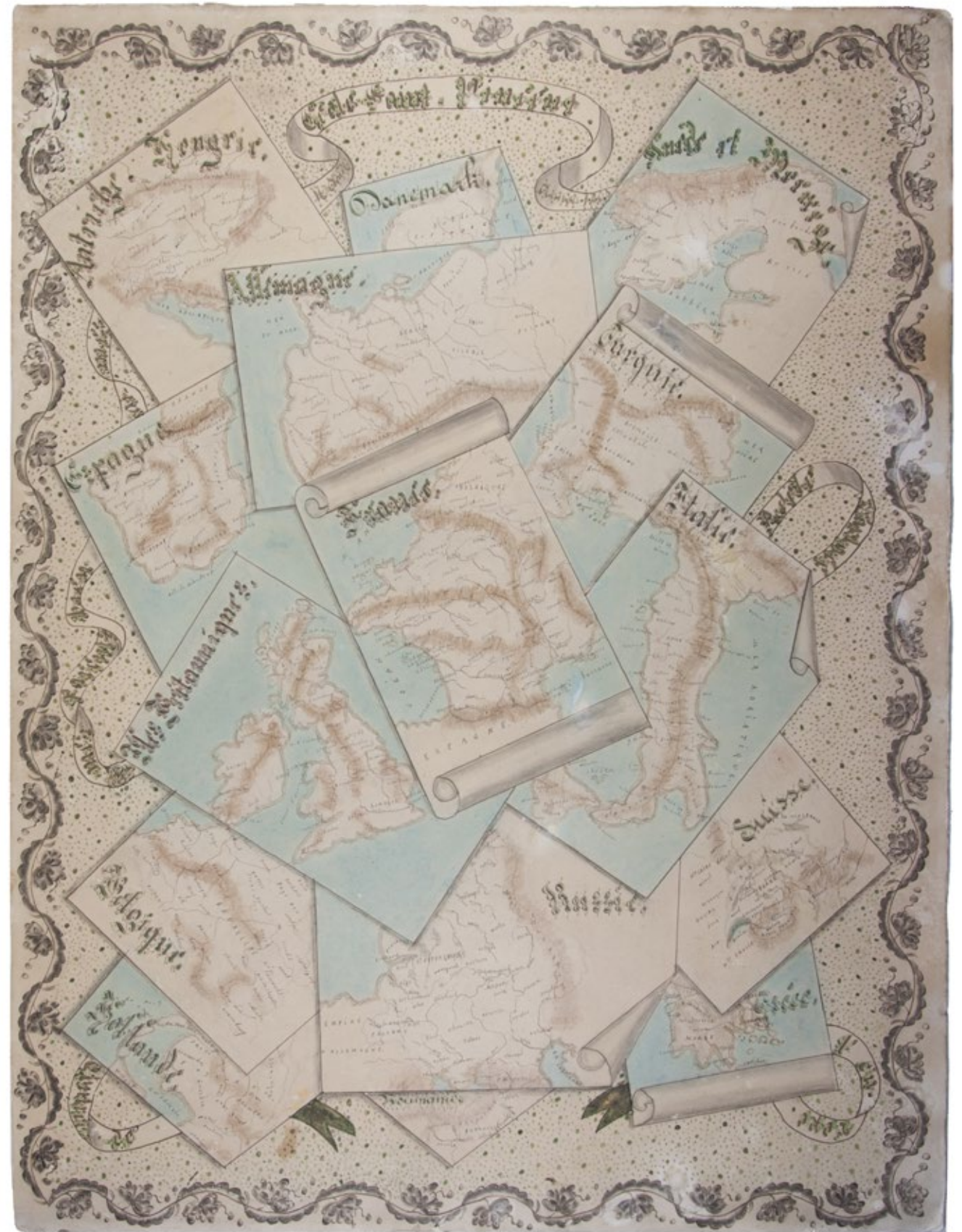
*Trompe l'oeil of country maps
by a young French artist*

25. [TROMPE L'OEIL]. [Trompe l'oeil drawing of country maps on a decorated background, titled:] Ciel Saint-Vincent.

[France?], August 1888. Brown and black ink, watercolour, chalk and gold paint on paper, mounted on several laminated sheets of paper (69.5 × 52.5 cm). € 2750

Charming trompe l'oeil of maps of European countries, on a decorated background, somewhat reminiscent of a church ceiling. It contains a French inscription “to my beloved parents”, which together with some inconsistencies in the use of perspective, suggest a young French artist. The maps show some interesting departures from reality: in the Netherlands, parts of the province of Gelderland are shifted 50 kilometres to the north, replacing Zwolle with Arnhem, and Sweden lacks Stockholm but includes Copenhagen in place of Malmö. However, the most humorous is in the map of Germany, which lacks its western neighbours – the Netherlands, Belgium, Luxembourg and France – giving it an extensive North Sea coast. The gothic lettering is inconsistent in style, with the artist apparently improvising an alphabet for each inscription, in the process forgetting Denmark.

Somewhat soiled and browned at the edges, with several white spots due to overpainting; the sheets are coming loose from one another.





Well-executed wall map of polder land between Gouda and Utrecht

26. [VINGBOONS, Johannes, Justus and David]. 'T hooghe heymraedtschap vanden lande van Woerden.

[Amsterdam, Hendrik de Leth], 1740. Wall map of the water district Woerden (South Holland) in 9 large loose untrimmed sheets (each 48 × 67 cm), with the title in a banderole across the top of three sheets, information about the 14th-century charters in a cartouche, a list of city and town officials in 1739 on a plinth, a compass rose, and a scale of Rijnland rods. € 6500

A large wall map of the water district Woerden in the province of South Holland (on the border of the province of Utrecht), including the cities of Woerden, Oudewater and Montfoort, as well as many smaller towns (including Bodegraven) and the surrounding polders. Altogether it covers a region smaller than 20 by 20 kilometres at a scale of 1:17 000 (north above and to the right) and if assembled it would have a map image of 122 by 152 cm. It shows the fortifications and principal buildings of the three main cities, other forts and (outside the three main cities) every house, church and windmill. It gives the names of the individual polders (with their boundaries), the roads, waterways and dikes, and some wind mills and houses.

The map was first engraved and printed in 1670 and 1671 by the Vingboons brothers, draftsmen, engravers and printers. The present is the sixth printing by Hendrik the Leth, who published the maps with and without the coats of arms, that were updated with most printings. The latter option without the coats of arms applies to the present set.

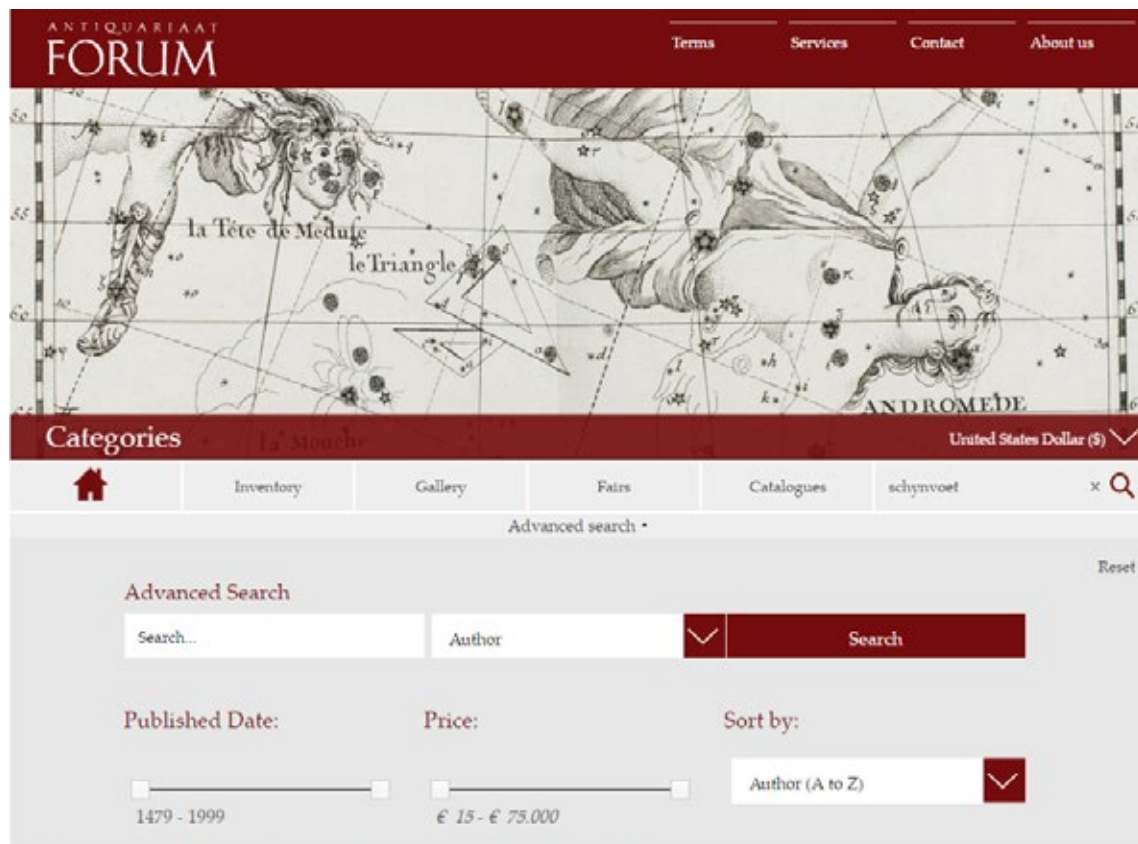
A few minor stains and some negligible inks smudges, and a piece cut off from the left margin of sheet 6 (not reaching the plate), otherwise in very good condition, and wholly untrimmed.

Donkersloot-de Vrij 764, 6th of 8 printings (6 copies).



More maps, atlases and books on cartography available at:

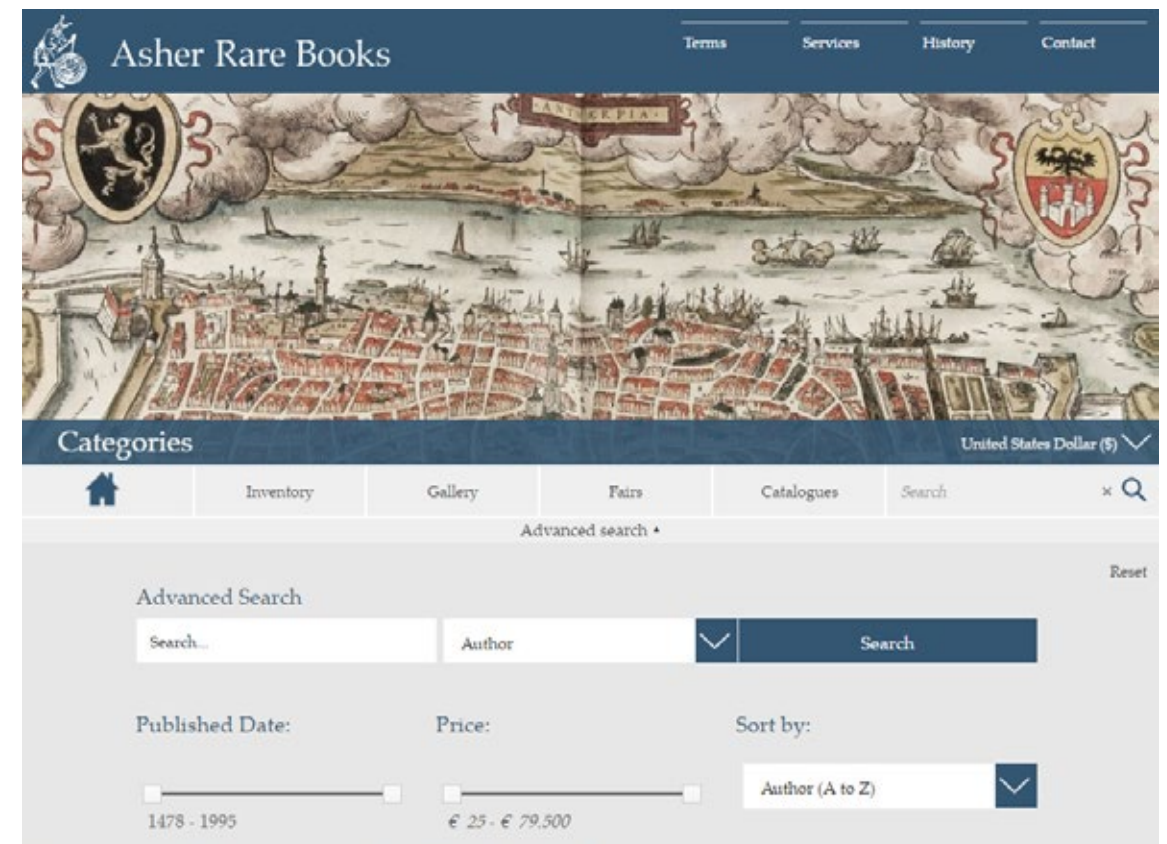
www.forumrarebooks.com/category/cartography_exploration/atlases_charts_maps_globes.html



Cartography & Exploration / Atlases, Charts, Maps & Globes

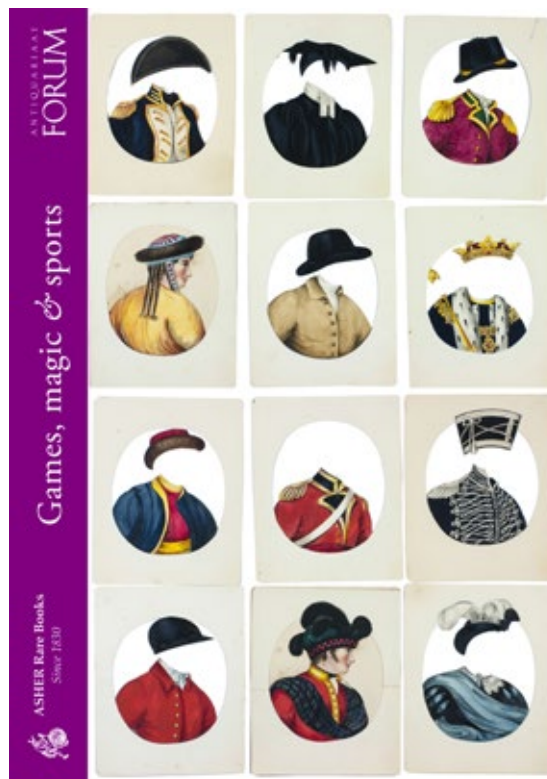


www.asherbooks.com/category/cartography_exploration/atlases_charts_maps_globes.html



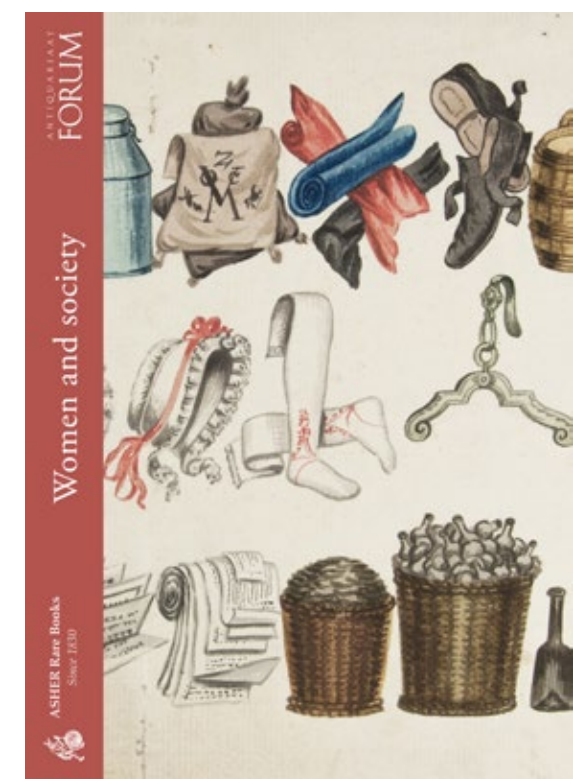
Cartography & Exploration / Atlases, Charts, Maps & Globes





Games, magic & sports

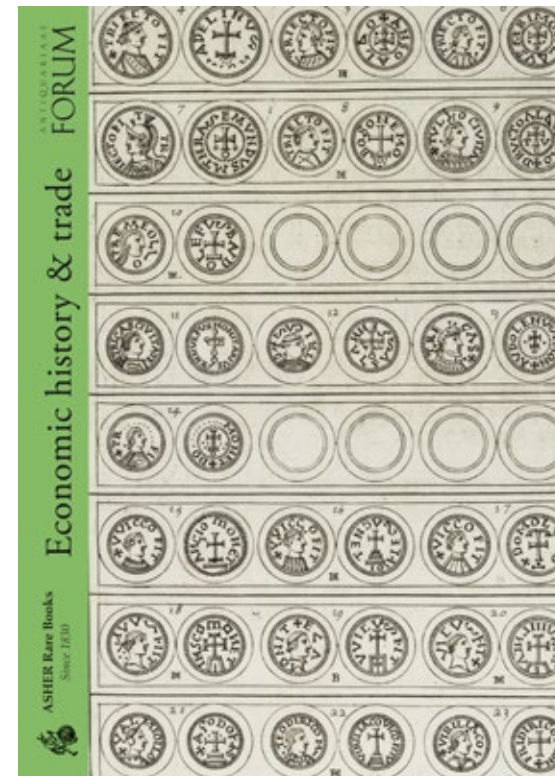
*Previously published
and available for download
Hard copies free on request at:*
info@forumrarebooks.com
info@asherbooks.com



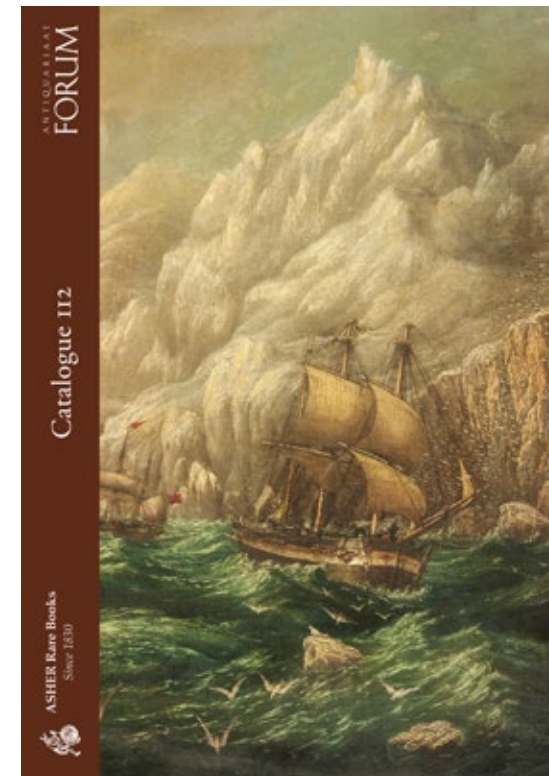
Women & Society



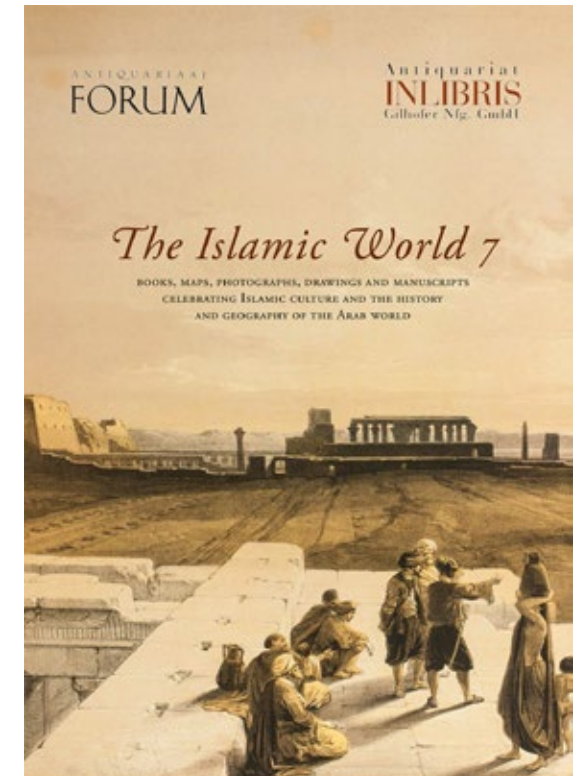
France



Economic History & Trade



Catalogue 112



The Islamic World 7